

West Dunbartonshire Council

- Section 5 : Developing Local Frameworks
- Population and Housing Stock
- Partner Agencies and Numbers
- Issues

WDC Population

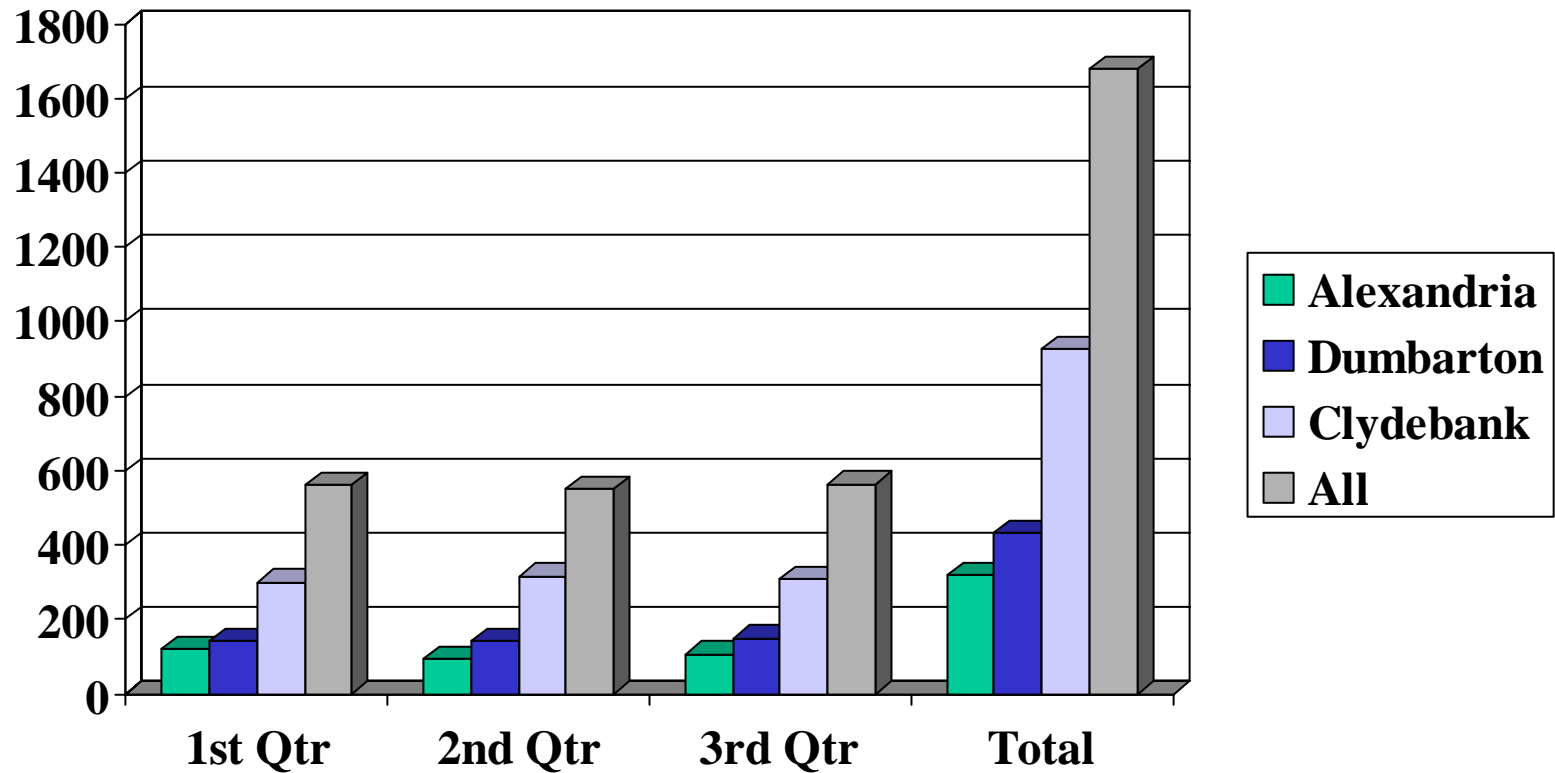
- Alexandria - 25,000
- Dumbarton - 20,000
- Clydebank - 47,000

- Total 92,000

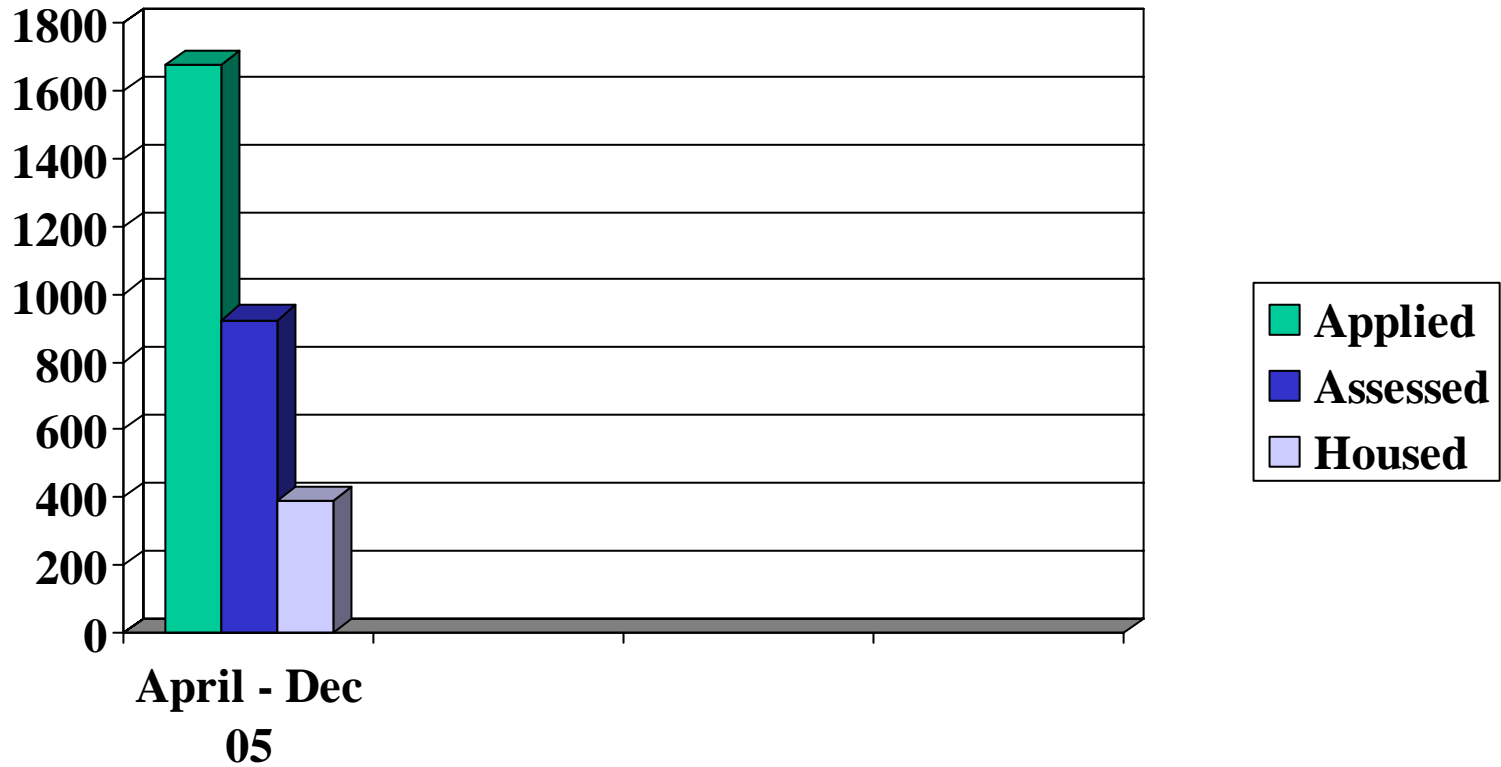
Households by Tenure

• Owner Occupied	23,000	55 percent
• WDC Tenancies	13,000	32
• Housing Assoc.	5,000	12
• Private Rented	600	1
• Total	41,600	

Homeless Applications: April - Dec 2005



Numbers Assessed and Housed



Permanent Housing: April- Dec 05

- Housed by Council - 312 (80%)
- Housed through Sect 5 - 79 (20%)
- Total 391

Section 5 Duty

- LA may request RSL in its area to provide accommodation for a household assessed as homeless
- LA must have regard to availability
- RSL must comply unless it has good reason
- RSL must offer a SST.
- Or arbitration arrangements apply.

Local RSL's

- Clydebank HA
- Dalmuir Park HA
- Faifley HA
- Knowes HA
- Trafalgar HA
- Bellsmyre HA
- Cordale HA
- Cube HA
- Dunbritton HA
- Other specialist providers

Referrals/ Housed: April - Dec 2005

- Referrals - 136
- Housed - 79

Difficulties

- Duty/ Choice
- Numbers/Quotas
- Choice/Obligation
- Partnership/Compliance
- Availability/Suitability
- Reasonableness/Waiting List Priorities

Key Issues

- Trust
- Commitment
- Communication
- Support